

Zhongshan LCS Compliance Testing Laboratory Ltd.

Add:Y1403, 14th floor, one of the 15 east xinxing avenue, guzhen town, zhongshan city,
guangdong province

Tel: (86) 0760-85323817 Fax: (86) 0760-85282906


Report No.: LCS220307007DR

TEST REPORT

Applicant : Shenzhen AMB Technology Co., Ltd
Address : Building 3, Huaqiang Logistics Industrial Park, Qingfeng Road, Baolong
Community, Longgang District, Shenzhen, Guangdong, China

Report on the submitted samples said to be:

Sample Name : Waterproof LED Bulb

Trade Mark : 

Style/ Item No. : BU140C-9WTD, BU140C-15WTD, BU140C-9WTD-F, BU140C-15WTD-F,
BU140C-15WTD-W/R

Manufacturer : Shenzhen AMB Technology Co., Ltd

Address : Building 3, Huaqiang Logistics Industrial Park, Qingfeng Road, Baolong
Community, Longgang District, Shenzhen, Guangdong, China

Sample Receiving Date : May 16, 2022

Testing Period : May 16, 2022 ~ May 25, 2022

Results : Please refer to next page(s).

Conclusion : Based on the performed tests on submitted sample(s), the results of Lead,
Mercury, Cadmium, Hexavalent chromium, Polybrominated biphenyls(PBBS),
Polybrominated diphenyl ethers(PBDEs) and phthalates such as bis
(2-ethylhexyl) phthalate(DEHP), Butyl benzyl phthalate(BBP),
(3-Dibutyl phthalate(DBP), and diisobutyl phthalate(DIBP) comply with the
limits as set by ROHS Directive (EU)2015/863 amending Annex II to Directive
2011/65/EU.

Signed for and on behalf of LCS

Tenny.Wang

Written By: _____

Tenny.Wang

Cat Zhang

Approved by: _____

Cat Zhang

The Test Report is issued by the Company subject to its General Conditions of Service printed overleaf. Attention is drawn to the limitations of liability, indemnification and jurisdictional issues defined therein. The results shown in this test report refer only to the sample(s) tested unless otherwise stated. This Test Report cannot be reproduced, except in full, without prior written permission of the Company.

1. LISTS

No.	Part Name	Report No.
1	White plastic shell	LCS211212030AR
2	Silvery metal shell	LCS211212060AR
3	Transparent plastic	LCS211212053AR
4	Blue plastic	LCS211212011AR
5	LED	LCS211212055AR
6	Solder	LCS211212063AR
7	PCB	LCS211212050AR
8	White plastic line	LCS211212042AR
9	Red plastic line	LCS211212041AR
10	Silvery metal line	LCS211212069AR
11	Yellow plastic tape(Transformer)	LCS211212032AR
12	Ceramic(Transformer)	LCS211212022AR
13	Black plastic(Transformer)	LCS211212033AR
14	Copper line(Transformer)	LCS211212064AR
15	Silvery metal needle (Transformer)	LCS211212065AR
16	Black plastic case(C1)	LCS211212037AR
17	Silvery metal case(C1)	LCS211212067AR
18	Black plastic(C1)	LCS211212039AR
19	Electrolytic paper(C1)	LCS211212038AR
20	Silvery metal needle(C1)	LCS211212068AR
21	Triode	LCS211212026AR
22	Diode	LCS211212025AR
23	Chips of resistance	LCS211212028AR
24	Chips of capacitance	LCS211212027AR
25	PCB	LCS211212050AR
26	Solder on PCB	LCS211212063AR

2. TEST DATA SUMMARY

Test items	Lead (Pb)	Cadmium (Cd)	Mercury (Hg)	Hexavalent Chromium Cr(VI)	PBBs	PBDEs	BBP	DBP	DEHP	DIBP
Unit	ppm	ppm	ppm	ppm	ppm	ppm	ppm	ppm	ppm	ppm
1	N.D.	N.D.	N.D.	N.D.	N.D.	N.D.	N.D.	N.D.	N.D.	N.D.
2	N.D.	N.D.	N.D.	N.D.	N.D.	N.D.	N.D.	N.D.	N.D.	N.D.
3	N.D.	N.D.	N.D.	N.D.	N.D.	N.D.	N.D.	N.D.	N.D.	N.D.
4	N.D.	N.D.	N.D.	N.D.	N.D.	N.D.	N.D.	N.D.	N.D.	N.D.
5	N.D.	N.D.	N.D.	N.D.	N.D.	N.D.	N.D.	N.D.	N.D.	N.D.
6	N.D.	N.D.	N.D.	N.D.	N.D.	N.D.	N.D.	N.D.	N.D.	N.D.
7	N.D.	N.D.	N.D.	N.D.	N.D.	N.D.	N.D.	N.D.	N.D.	N.D.
8	N.D.	N.D.	N.D.	N.D.	N.D.	N.D.	N.D.	N.D.	N.D.	N.D.
9	N.D.	N.D.	N.D.	N.D.	N.D.	N.D.	N.D.	N.D.	N.D.	N.D.
10	N.D.	N.D.	N.D.	N.D.	N.D.	N.D.	N.D.	N.D.	N.D.	N.D.
11	N.D.	N.D.	N.D.	N.D.	N.D.	N.D.	N.D.	N.D.	N.D.	N.D.
12	N.D.	N.D.	N.D.	N.D.	N.D.	N.D.	N.D.	N.D.	N.D.	N.D.
13	N.D.	N.D.	N.D.	N.D.	N.D.	N.D.	N.D.	N.D.	N.D.	N.D.
14	N.D.	N.D.	N.D.	N.D.	N.D.	N.D.	N.D.	N.D.	N.D.	N.D.
15	N.D.	N.D.	N.D.	N.D.	N.D.	N.D.	N.D.	N.D.	N.D.	N.D.
16	N.D.	N.D.	N.D.	N.D.	N.D.	N.D.	N.D.	N.D.	N.D.	N.D.
17	N.D.	N.D.	N.D.	N.D.	N.D.	N.D.	N.D.	N.D.	N.D.	N.D.
18	N.D.	N.D.	N.D.	N.D.	N.D.	N.D.	N.D.	N.D.	N.D.	N.D.
19	N.D.	N.D.	N.D.	N.D.	N.D.	N.D.	N.D.	N.D.	N.D.	N.D.
20	N.D.	N.D.	N.D.	N.D.	N.D.	N.D.	N.D.	N.D.	N.D.	N.D.
21	N.D.	N.D.	N.D.	N.D.	N.D.	N.D.	N.D.	N.D.	N.D.	N.D.
22	N.D.	N.D.	N.D.	N.D.	N.D.	N.D.	N.D.	N.D.	N.D.	N.D.
23	N.D.	N.D.	N.D.	N.D.	N.D.	N.D.	N.D.	N.D.	N.D.	N.D.
24	N.D.	N.D.	N.D.	N.D.	N.D.	N.D.	N.D.	N.D.	N.D.	N.D.

25	N.D.	N.D.	N.D.	N.D.	N.D.	N.D.	N.D.	N.D.	N.D.	N.D.
26	N.D.	N.D.	N.D.	N.D.	N.D.	N.D.	N.D.	N.D.	N.D.	N.D.

Note:

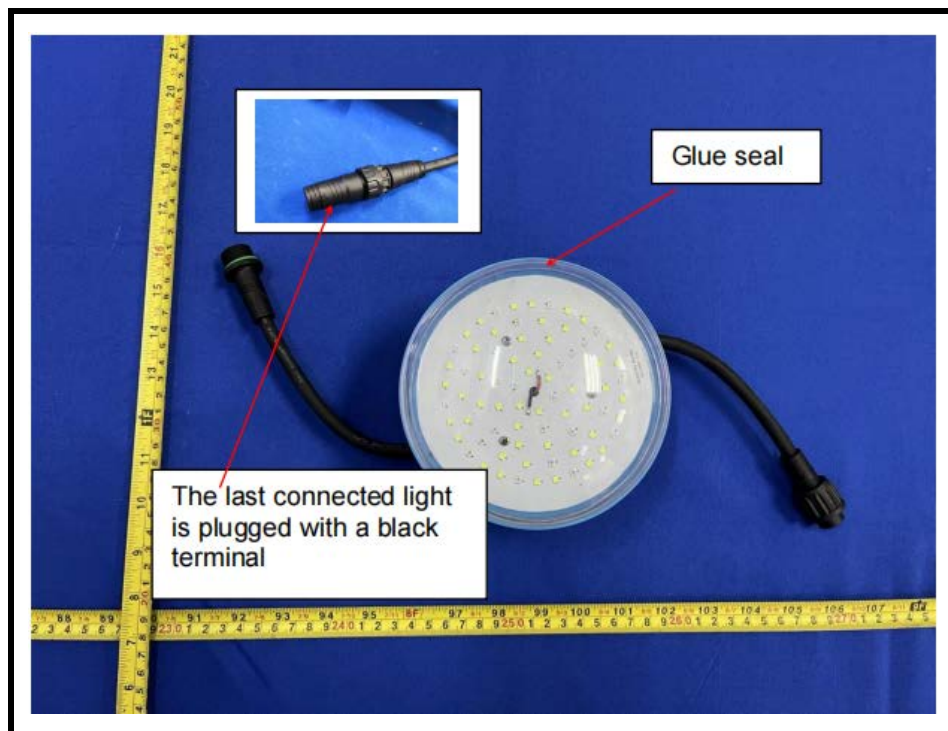
- (1) N.D. = Not detected (<MDL)
- (2) ppm = mg/kg
- (3) N.A. = Not Analyzed
- (4) Negative = the concentration of Hexavalent Chromium extracted from 50cm2 sample is less than the detection limit.

Remark: Lead in electronic components, which are exempted from (RoHS) the requirements.

Disclaimer:

- The integration report is not equivalent to the test report.
- LCS does not shoulder responsibility for the authenticity of all the test data listed in integration report, which are submitted by the applicants.
- The applicants are responsible for all legal obligation caused by the inaccuracy and invalidity of the original report.
- If this disclaimer contradicts any other terms and conditions of LCS, this disclaimer will prevail.
- The above data are from customers.

3. PHOTOGRAPHS OF TEST SAMPLE



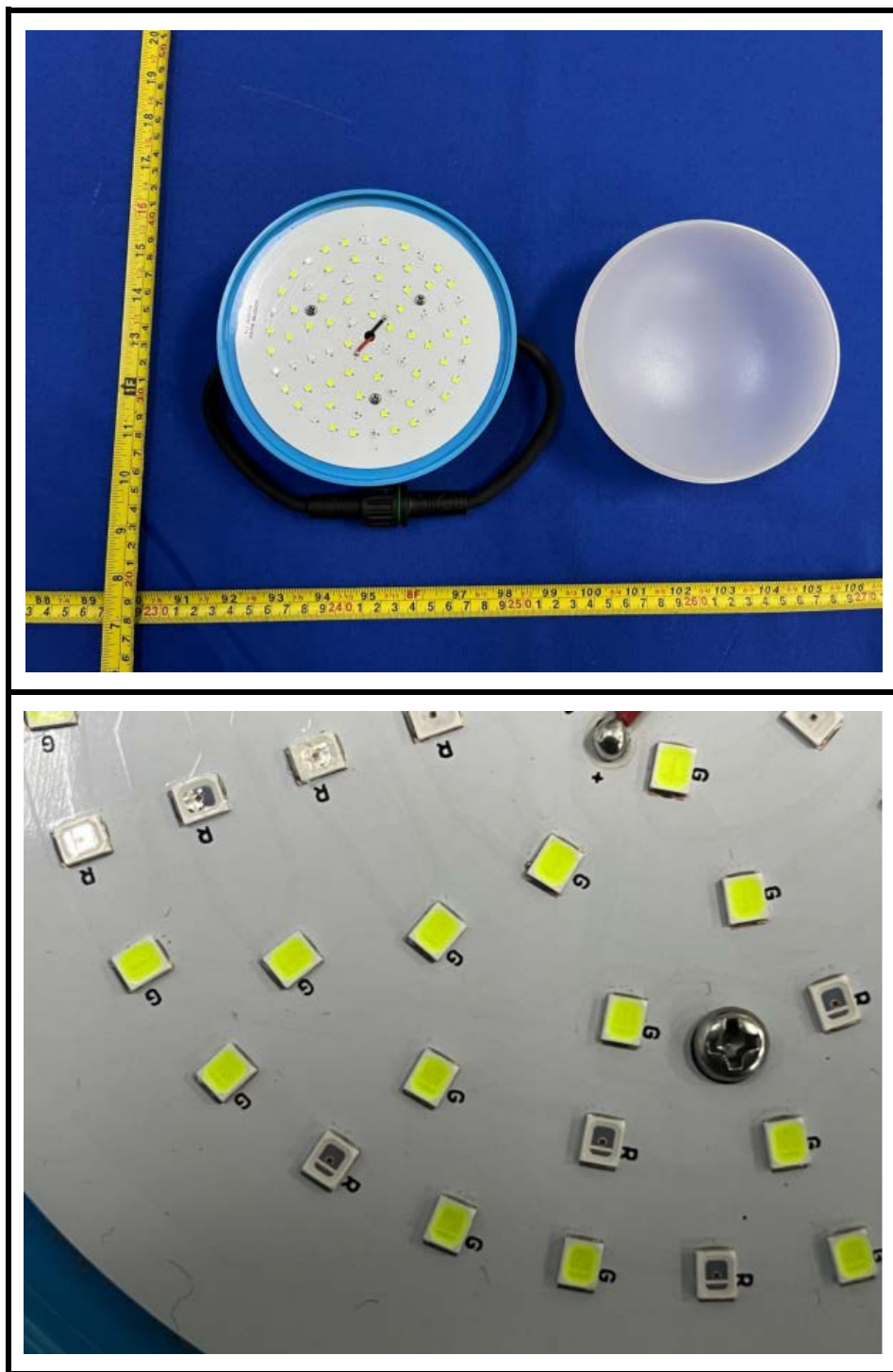


Zhongshan LCS Compliance Testing Laboratory Ltd.

Add: Y1403, 14th floor, one of the 15 east xinxing avenue, guzhen town, zhongshan city, guangdong province

Tel: (86) 0760-85323817 Fax: (86) 0760-85282906

Report No.: LCS220307007DR



LCS authenticate the photo on original report only
End of Report